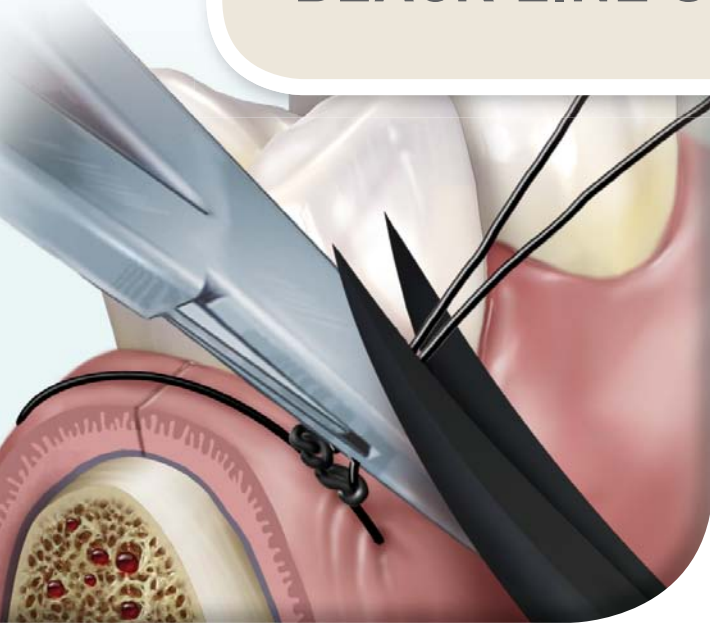


Introducing the Hu-Friedy

BLACK LINE SCISSORS COLLECTION



Designed for performance, the Hu-Friedy Black Line is engineered to optimize clinical outcomes by delivering efficiency throughout the entire perio and surgical procedure. From reducing light reflection to enhancing visibility at the surgical site, the Black Line was designed with the clinician in mind. In addition to the surgical hand instrument portfolio, the Black Line now includes 7 Super-Cut scissor designs delivering superior performance through enhanced precision and innovation.

THE BLACK LINE SCISSORS FEATURES:

- Super-Cut design featuring a **razor sharp blade and serrated edge for reduced tissue slippage**
- Performance engineered coating for **optimal edge retention**
- Distinct black finish for **enriched contrast and visual acuity at the surgical site and underlying tissue**
- **Reduced light reflection** afforded by a matte black finish
- Gold screw for easy identification of **Super-Cut design**

GOLD SCREW FOR
EASY SUPER-CUT
IDENTIFICATION

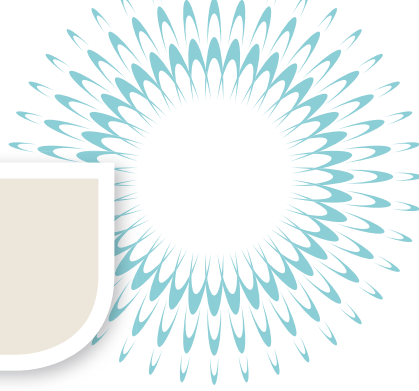
SUPER-CUT DESIGN
FEATURING A RAZOR SHARP
BLADE AND SERRATED
EDGE FOR REDUCED TISSUE
SLIPPAGE

PERFORMANCE
ENGINEERED COATING
FOR REDUCED LIGHT
REFLECTION AND
ENHANCED CONTRAST

How the best perform

Hu-Friedy

BLACK LINE SCISSORS



LaGrange
Double-Curved,
11,5 cm,
Super-Cut
| **S14SCX**



Metzenbaum
14,25 cm,
Super-Cut
| **S19SCX**



Iris,
Straight/Delicate,
11,5 cm,
Super-Cut
| **S17SCX**



Iris,
Curved/Delicate,
11,5 cm,
Super-Cut
| **S18SCX**



Goldman-Fox,
Straight,
13,5 cm,
Super-Cut
| **S20SCX**



Goldman-Fox,
Curved,
12,5 cm,
Super-Cut
| **S16SCX**



Castro Microsurgical,
18 cm,
Super-Cut
| **SPVX**

